



"SPLITROCK II"

SKelley Marketing



- **SPLIT ENTRY**
- **1,315 (2,450 Sq. Ft. Potential)**
- **3 Bedrooms / 2 Bath**
- **3 Car Garage**
- **Central Air Conditioning**
- **Floor Trusses**
- **Vaulted ceiling Kitchen, Dining and Living Room**
- **Sidelite window in front door**
- **Asphalt Driveway**
- **Shakes in 2 Gables**
- **Skirt Boards**
- **Ranch Polar Base and Casing with White 3 Panel Painted Doors**
- **Face frame included**
- **Closet shelving white**
- **Waterline to Refrigerator**

- **Steel paneled Garage door non insulated**
- **Electric hook ups Range and Dryer**
- **Two paint choice colors from Sherwin Williams**
- **Door at bottom of stairs**
- **RWC Warranty**

Allowances Included in Price:

- **Sod**
- **Lighting**
- **Flooring**
- **Appliances**

*Inquire about other options and details.
Prices subject to change at any time. House
drawing on the back may not represent
standard features of this plan design.*

Offered by: *Steve Kelley*

RE/MAX Results

2677 Bunker Lake Blvd. N.W.
Andover, MN 55304

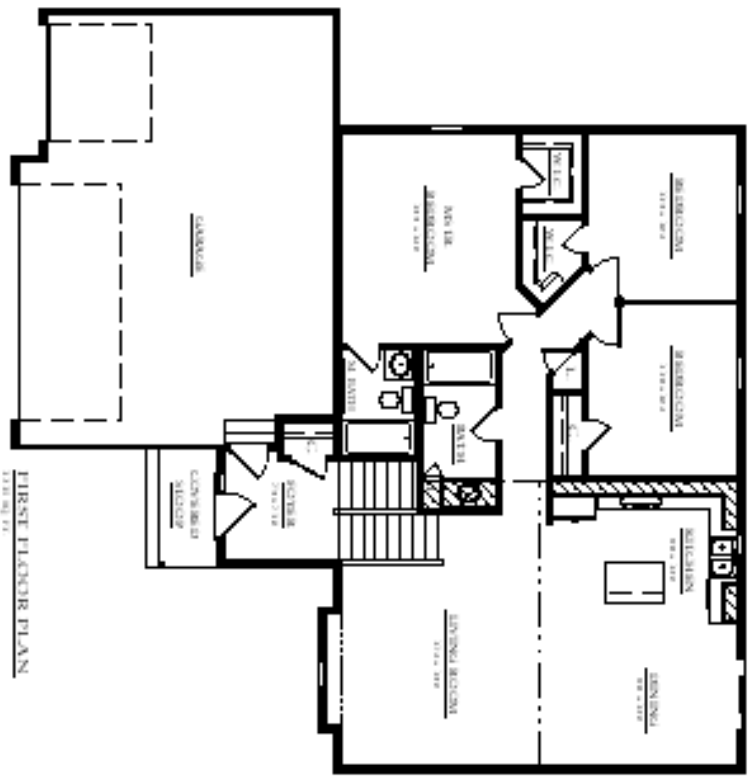
763-323-6225

Email: steve@skelleymarketing.com

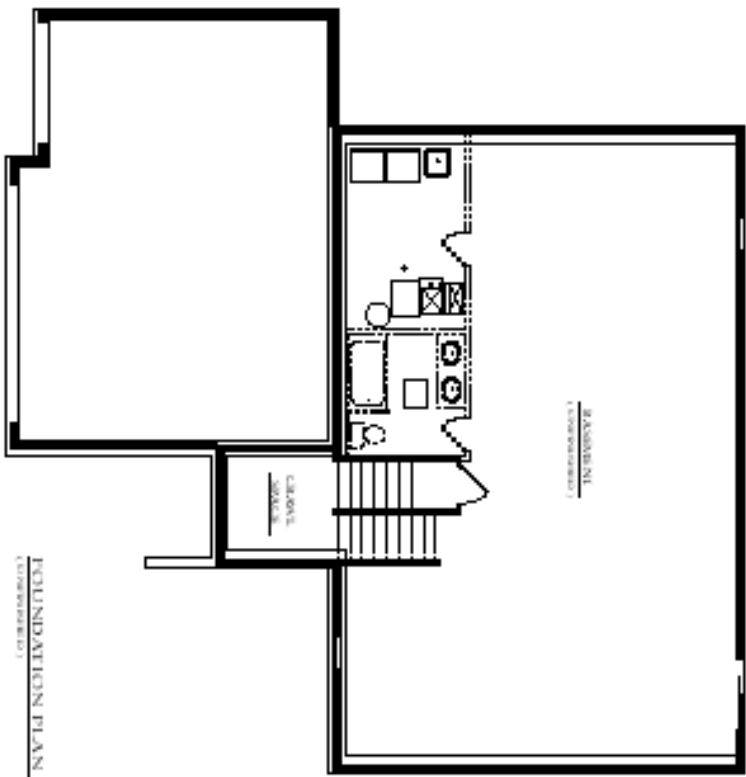
Web: www.skelleymarketing.com



MN#20631919



FIRST FLOOR PLAN



FOUNDATION PLAN