



“ROCKWOOD”

SKelley Marketing



- **RAMBLER**
- 1,800 Sq. Ft. Finished, (3,346 Sq. Ft. Potential)
- 2 Bedrooms / 2 1/2 Baths
- 4 Bedroom/ 3 1/2 Bath (potential)
- 3 Car Garage
- Floor Trusses
- 9 Foot main floor ceiling
- 30 Year Timberline shingles color choice
- Vinylite slider windows
- Front concrete porch with pillars
- Asphalt Driveway
- Master Bath whirlpool tub separate ceramic shower
- Hardi Plank front with shakes and trim per plan
- Vinyl siding on rear and sides
- AC and Air to Air Exchanger
- Brushed nickel hardware all plumbing and hardware
- Granite on Kitchen island
- Fireplace upstairs
- Bath tops solid surface with built in sinks
- Glass shower door Master Bath
- Skirtboards
- Knockdown Ceilings
- Poplar trim 3 inch wide casing and 4 inch base
- 4 Panel doors
- Poplar stainable cherry cabinets with painted panel doors
- Waterline to Refrigerator
- Steel paneled Garage door insulated with opener on main door
- Electric hook ups range and dryer
- Two paint choice colors from Sherwin Williams
- RWC Warranty

Allowances Included in Price:

- Sod
- Lighting
- Flooring
- Appliances

Offered by: *Steve Kelley*

RE/MAX Results

3351 Round Lake Blvd.
Anoka, MN 55303

763-323-6225

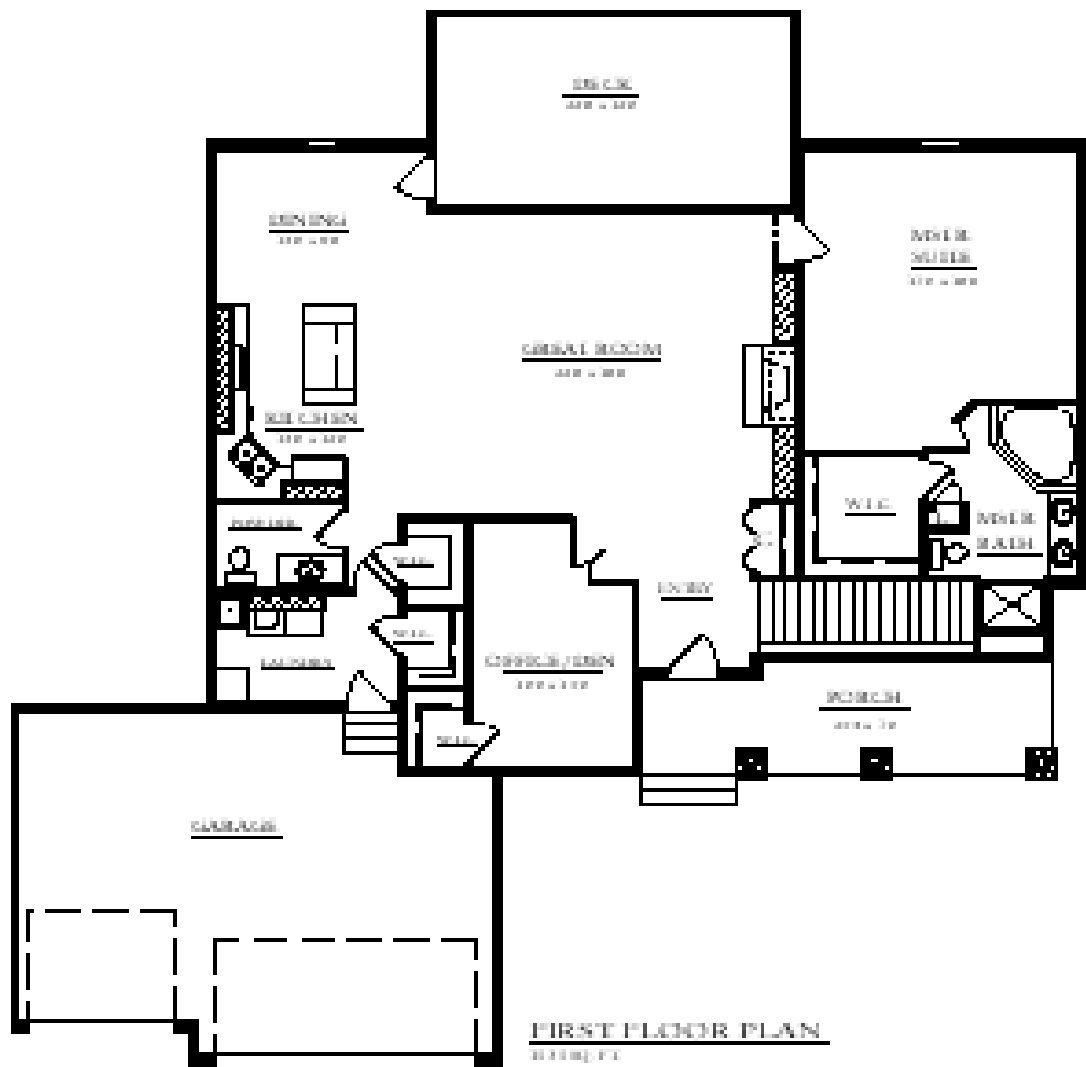
Email: steve@skelleymarketing.com

Web: www.skelleymarketing.com



MN#20631919

*Inquire about other options and details.
Prices subject to change at any time. House
drawing on the back may not represent
standard features of this plan design.*



FIRST FLOOR PLAN
 11/10/2014